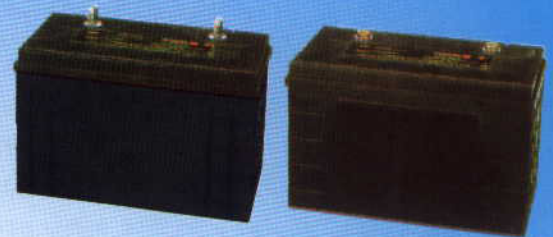


POWER *Plus* BATTERY

PM & PBC SERIES

(AGM TECHNOLOGY)



Maintenance-Free Rechargeable Long Design Life Sealed Lead Acid Batteries

Features

- Maintenance Free
- Leak Proof / Spill Proof
- Gas Recombination
- Absorbed Electrolyte
- Float / Cycle Use
- Low Self Discharge Rate
- Safety Valve
- Lead Calcium Alloy
- Useable In Any Position
- Rugged Design

Application

- UPS System DC & AC
- Telecommunication PABX etc.
- Emergency Lighting
- Fuse & Security Alarm System
- Portable VTR / TV
- Power Tool
- Computer
- Cellular Radio / Microwave
- Photovoltaic
- Electronic Torch
- Window Washer

SEALED VRLA MONOBLOC AGM BATTERIES
Capacities: 35AH to 230AH

Power-plus Standard Range advanced AGM absorbed electrolyte technology ensures reliable performance, safety, outstanding battery life and value. Batteries have a design life of 12 years on 20°C (68°F) and comply with BS 6290 Part 4, EUROBAT (IEC 896-2) standards and are a recognized component of UL1989 under the Standby Battery Category. Power-plus Standard Range VRLA batteries are also designed to comply with the latest specifications of the Power and Telecommunications Industry.

Features

- Valve regulated Lead Acid (VRLA) design
- Non-gassing
- Never needs addition of water
- Spill-proof and leak-proof
- Operates at a low internal pressure
- Multi-position usage
- Multi-cell container
- Flame Retardant material UL 94 V-0

Applications

- Telecommunications
- Emergency Lighting
- UPS system
- Cellular Radio
- Mobility / Home Medical
- Computer Power Supply
- Standby Power Supply
- Photovoltaic

Specifications

- Voltage: 6V, 12V nominal
- Plate alloy: Lead calcium grid alloy
- Case & cover: Flame Retardant UL-94V0
- Electrolyte: Dilute sulfuric acid
- Specific gravity: 1.300
- Charge Voltage @20°C (68°F)
Cycle service: 2.40~2.45 VPC
Float service: 2.25~2.30 VPC

Operating temperature range

Discharge: -40°C (-40°F) to +60°C (140°F)

Charge: -20°C (-4°F) to +50°C (122°F)

Ideal operating temperature range

+20°C (68°F) to +25°C (77°F)



POWER-plus Battery Company, Inc.
Supply reliable full power solutions
Visit our website for more product information
www.powerplusbatteries.com

General Features

○ Valve Regulated (Sealed) Construction

Standard Range is of the AGM (Absorbed Glass Mat) valve regulated (sealed) lead acid rechargeable type. The acid is suspended in a specially formulated non-woven glass mat separator. All the acid is absorbed in this manner and it provides a safe leak-proof & non-spillable battery.

○ Gas Recombination System

The gasses generated in the normal charge / discharge use of the battery are internally recombined during normal operation. In normal operation, more than 99% of the gases generated are efficiently recombined.

○ Maintenance Free

The Battery has been designed and built such that no addition of electrolyte is needed for the whole life of the battery. There is no need to add water or take specific gravity readings.

○ Battery Life – Float Service

The Standard Range is designed for float (Standby) service with design life of 10+ years at 20°C (68°F).

○ Battery Life – Cycle Service

The Standard Range is designed for more than 2000 charge / discharge cycles for 30%-DOD and 600 cycles for 80%-DOD, but actual quantity will depend on the Depth of Discharge (D.O.D.).

○ Safety Valve

If excess pressure builds up within the battery, the safety valve automatically opens and re-closes, releasing the gas at 1-3 PSI. The valve does not allow the ingress of oxygen which is harmful to the efficient operation and the life of the battery.

○ Temperature Range for Normal Operation

The Standard Range has a wide operating temperature range. However for maximum life and safety, continuous operation over 45°C is not recommended.

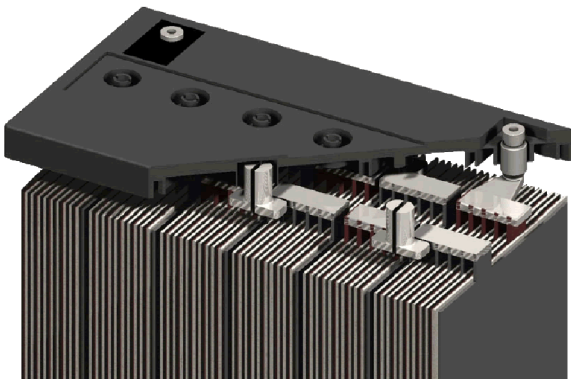
○ Grid Design and Paste Formation

The Battery has optimized the grid design and paste formation to maximize the operating and storage life of the AGM battery. This optimized design provides the following advantages:

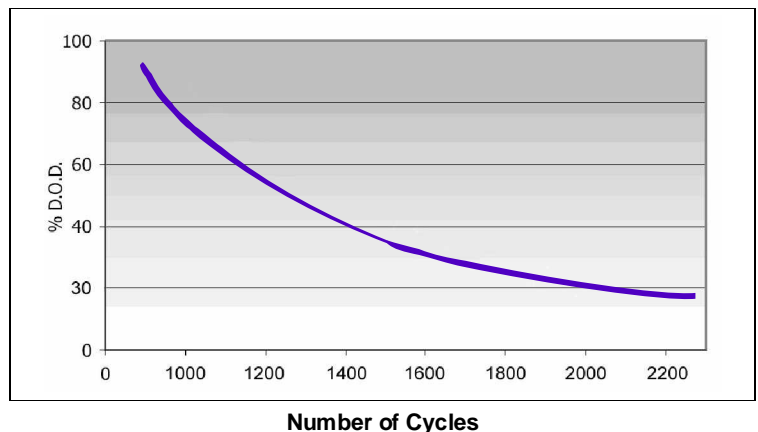
- 2 Excellent recovery from deep discharge or over discharge;
- 2 Low self-discharge to ensure maximum storage time when not in use;
- 2 Excellent cycling capability for an AGM battery;
- 2 Adequate safety margins in tough operating conditions.

○ Use In any Position

The Standard Range batteries are designed to use in both vertical and horizontal position.



Battery Cycle Life vs. Depth of Discharge (D.O.D.)



Standard Range Discharge Ampere Hour Data @ 20°C (68°F)

Battery Model	End VP C	Discharge Data Amps @ 20°C						End VPC	Discharge Data Ampere Hours @ 20°C									
		Discharge Time In Minutes							Discharge Time In Hours									
		5	10	15	30	45	60		1.5	2	3	4	5	8	10	12	20	24
PBC1235	1.80	90.3	67.1	53.1	34.9	25.4	21.3	1.85	23.2	23.6	25.2	26.6	27.6	30.2	32.1	33.0	36.4	36.2
	1.75	104	75.2	57.6	35.5	26.7	21.7	1.80	24.8	25.2	26.7	27.9	29.0	32.0	33.0	34.2	36.8	37.3
	1.67	111	81.9	60.8	36.0	27.2	22.2	1.75	25.4	25.6	27.4	28.8	29.6	32.4	33.8	34.5	39.1	38.4
PBC1250	1.80	146	109	86.3	58.6	42.5	34.9	1.85	36.9	38.5	41.6	43.0	44.2	48.1	49.6	50.6	57.2	58.1
	1.75	172	124	92.9	59.3	43.3	35.7	1.80	37.9	40.4	43.3	45.4	46.7	50.9	53.0	54.1	59.9	60.2
	1.67	182	133	98.0	60.0	44.5	36.6	1.75	39.5	41.4	44.8	46.6	48.0	52.3	54.5	55.6	60.6	61.6
PBC1255	1.80	151	113	89.6	60.8	44.1	36.2	1.85	38.3	40.0	43.2	44.6	45.8	49.9	51.4	52.6	59.4	60.3
	1.75	178	129	96.4	61.5	44.9	37.0	1.80	39.3	41.9	44.9	47.1	48.5	52.9	55.0	56.1	62.1	62.4
	1.67	189	138	102	62.2	46.2	38.0	1.75	41.0	43.0	46.5	48.4	49.8	54.3	56.5	57.7	62.9	63.9
PBC1265	1.80	191	142	113	72.4	54.3	44.7	1.85	49.6	50.1	53.7	56.1	58.2	63.4	65.3	66.7	73.8	74.4
	1.75	220	160	122	75.5	56.4	46.8	1.80	51.6	53.3	56.8	59.7	61.5	67.3	70.0	71.2	77.5	78.8
	1.67	237	174	129	78.2	58.3	47.6	1.75	52.2	54.7	58.5	61.1	63.3	68.9	71.8	73.3	79.8	81.0
PBC1280	1.80	220	163	129	82.7	61.9	51.0	1.85	53.7	57.4	61.2	64.3	66.6	72.5	74.7	76.4	84.8	86.2
	1.75	252	183	140	89.0	66.4	54.9	1.80	56.8	60.9	65.0	68.0	70.7	76.9	80.0	81.5	88.7	90.1
	1.67	272	198	151	92.2	68.6	57.5	1.75	58.4	62.4	66.6	69.8	72.4	78.8	82.1	83.7	91.2	92.5
PBC1290	1.80	249	186	146	95.3	69.3	58.5	1.85	60.5	64.6	69.1	72.2	74.8	81.6	84.1	87.0	96.5	94.5
	1.75	286	205	158	97.4	72.7	60.1	1.80	64.0	68.7	73.3	76.7	79.3	86.5	90.0	91.7	100	101
	1.67	309	226	167	101	75.0	61.6	1.75	65.7	70.3	75.0	78.5	81.6	88.8	92.5	94.2	103	104
PBC12100	1.80	274	205	163	104	77.7	63.8	1.85	67.0	71.9	76.7	80.2	83.3	90.7	94.0	97.9	106	108
	1.75	317	230	177	108	80.7	66.7	1.80	71.7	76.1	81.4	85.2	88.4	95.8	100	102	111	113
	1.67	343	251	185	112	83.3	68.4	1.75	72.9	78.0	83.5	87.1	90.1	98.5	103	105	114	116
PBC12110	1.80	302	228	181	118	86.1	72.6	1.85	74.0	79.2	84.7	88.8	91.5	99.8	103	107	118	119
	1.75	349	255	195	120	89.1	73.6	1.80	80.3	84.0	89.9	93.8	97.3	106	110	112	122	123
	1.67	379	277	205	123	91.8	75.5	1.75	85.6	86.0	91.9	96.5	99.5	109	113	115	126	129
PBC12120	1.80	329	247	195	127	94.5	77.5	1.85	80.7	86.6	92.4	97.6	102	111	116	124	130	131
	1.75	384	277	213	131	97.2	80.4	1.80	86.8	91.9	98.0	103	107	116	120	134	135	136
	1.67	412	303	224	136	100	82.5	1.75	89.6	94.1	100	105	110	119	123	136	137	140
PBC12135	1.80	370	277	219	142	106	87.0	1.85	90.7	97.3	104	110	114	126	131	140	145	146
	1.75	431	311	238	146	109	90.4	1.80	97.5	103	110	115	120	131	135	151	152	154
	1.67	463	341	250	154	113	92.6	1.75	101	106	113	119	123	134	139	154	155	157
PBC12150	1.80	411	309	246	158	117	96.4	1.85	101	108	116	122	127	136	140	142	157	159
	1.75	475	346	264	164	121	100	1.80	108	114	122	128	133	143	150	153	166	168
	1.67	514	377	277	167	124	103	1.75	110	117	126	133	136	149	154	158	172	174
PBC12160	1.80	439	329	261	168	126	103	1.85	108	115	124	131	135	145	150	152	167	169
	1.75	507	369	281	176	130	107	1.80	115	122	131	136	141	153	160	163	179	181
	1.67	549	403	296	180	133	110	1.75	116	126	134	141	145	159	164	168	183	185
PBC12180	1.80	492	369	293	187	140	118	1.85	120	129	138	144	150	166	171	175	191	189
	1.75	570	415	317	195	150	119	1.80	129	138	146	153	159	172	180	183	200	202
	1.67	614	449	332	201	152	123	1.75	132	140	150	157	162	178	184	189	205	208
PBC12200	1.80	548	411	325	208	157	132	1.85	135	143	153	161	166	185	190	195	213	210
	1.75	636	463	352	217	165	134	1.80	143	153	163	170	177	191	200	204	222	225
	1.67	684	500	368	224	168	137	1.75	147	157	166	175	180	198	205	210	228	232

PBC12230	1.80	632	474	375	239	181	152	1.85	156	166	177	185	192	213	220	225	246	243
	1.75	734	534	407	251	191	155	1.80	166	177	187	196	204	221	230	235	255	259
	1.67	788	577	425	257	195	158	1.75	169	181	192	202	208	228	237	243	264	267
PBC665	1.80	179	134	108	68.8	51.3	42.1	1.85	43.9	47.0	50.8	53.2	55.5	59.4	60.7	61.8	68.2	69.3
	1.75	208	151	115	71.6	52.6	43.8	1.80	47.0	49.9	53.2	55.9	57.9	62.7	65.0	67.1	72.5	73.5
	1.67	225	165	121	73.1	54.1	44.8	1.75	48.0	51.3	55.1	57.9	59.4	65.0	67.1	69.3	74.6	76.0
PBC6150	1.80	411	309	246	158	117	96.4	1.85	101	108	116	122	127	136	140	142	157	159
	1.75	475	346	264	164	121	100	1.80	108	114	122	128	133	143	150	153	166	168
	1.67	514	377	277	167	124	103	1.75	110	117	126	133	136	149	154	158	172	174
PBC6180	1.80	492	369	293	187	140	118	1.85	120	129	138	144	150	166	171	175	191	189
	1.75	570	415	317	195	150	119	1.80	129	138	146	153	159	172	180	183	200	202
	1.67	614	449	332	201	152	123	1.75	132	140	150	157	162	178	184	189	205	208
PBC6200	1.80	548	411	325	208	157	132	1.85	135	143	153	161	166	185	190	195	213	210
	1.75	636	463	352	217	165	134	1.80	143	153	163	170	177	191	200	204	222	225
	1.67	684	500	368	224	168	137	1.75	147	157	166	175	180	198	205	210	228	232

Actual battery performance data may be \pm 5% of figures shown above

Standard Range Discharge Amperes Data @ 20°C (68°F)

Battery Model	End VP C	Discharge Data Amps @ 20°C						End VPC	Discharge Data Amps @ 20°C									
		Discharge Time In Minutes							Discharge Time In Hours									
		5	10	15	30	45	60		1.5	2	3	4	5	8	10	12	20	24
PBC1235	1.80	90.3	67.1	53.1	34.9	25.4	21.3	1.85	15.5	11.8	8.41	6.64	5.52	3.78	3.21	2.75	1.82	1.51
	1.75	104	75.2	57.6	35.5	26.7	21.7	1.80	16.4	12.7	8.89	6.99	5.80	4.00	3.30	2.86	1.84	1.56
	1.67	111	81.9	60.8	36.0	27.2	22.2	1.75	16.9	12.9	9.12	7.20	5.93	4.05	3.38	2.88	1.96	1.60
PBC1250	1.85	146	109	86.3	58.6	42.5	34.9	1.85	24.5	19.3	13.9	10.7	8.82	6.01	4.96	4.21	2.86	2.42
	1.80	172	124	92.9	59.3	43.3	35.7	1.80	25.2	20.3	14.5	11.3	9.36	6.37	5.30	4.49	3.00	2.51
	1.75	182	133	98.0	60.0	44.5	36.6	1.75	26.3	20.6	14.9	11.6	9.60	6.54	5.45	4.63	3.03	2.57
PBC1255	1.80	151	113	89.6	60.8	44.1	36.2	1.85	25.4	20.0	14.4	11.1	9.15	6.23	5.14	4.37	2.97	2.51
	1.75	178	129	96.4	61.5	44.9	37.0	1.80	26.1	21.0	15.0	11.7	9.71	6.61	5.50	4.66	3.11	2.60
	1.67	189	138	102	62.2	46.2	38.0	1.75	27.3	21.4	15.5	12.0	9.96	6.79	5.65	4.81	3.14	2.66
PBC1265	1.80	191	142	113	72.4	54.3	44.7	1.85	33.1	25.1	17.9	14.0	11.6	7.92	6.53	5.56	3.69	3.10
	1.75	220	160	122	75.5	56.4	46.8	1.80	34.3	26.7	18.9	15.0	12.3	8.41	7.00	5.94	3.87	3.28
	1.67	237	174	129	78.2	58.3	47.6	1.75	34.7	27.3	19.5	15.3	12.7	8.62	7.18	6.11	3.99	3.38
PBC1280	1.80	220	163	129	82.7	61.9	51.0	1.85	35.8	28.8	20.4	16.1	13.4	9.06	7.47	6.36	4.24	3.59
	1.75	252	183	140	89.0	66.4	54.9	1.80	37.9	30.4	21.7	16.9	14.1	9.61	8.00	6.80	4.43	3.74
	1.67	272	198	151	92.2	68.6	57.5	1.75	38.9	31.3	22.3	17.5	14.4	9.85	8.21	6.98	4.56	3.85
PBC1290	1.80	249	186	146	95.3	69.3	58.5	1.85	40.3	32.3	23.0	18.0	15.0	10.2	8.41	7.25	4.83	3.93
	1.75	286	205	158	97.4	72.7	60.1	1.80	42.7	34.3	24.5	19.1	15.9	10.9	9.00	7.65	5.00	4.23
	1.67	309	226	167	101	75.0	61.6	1.75	43.7	35.1	25.0	19.7	16.3	11.1	9.25	7.85	5.14	4.35
PBC12100	1.80	274	205	163	104	77.7	63.8	1.85	44.7	35.9	25.5	20.1	16.6	11.3	9.40	8.17	5.30	4.51
	1.75	317	230	177	108	80.7	66.7	1.80	47.8	38.1	27.1	21.3	17.7	11.9	10.0	8.48	5.54	4.69
	1.67	343	251	185	112	83.3	68.4	1.75	48.5	39.0	27.8	21.8	18.0	12.3	10.3	8.72	5.70	4.84
PBC12110	1.80	302	228	181	118	86.1	72.6	1.85	49.3	39.5	28.2	22.2	18.3	12.4	10.3	8.88	5.89	4.98
	1.75	349	255	195	120	89.1	73.6	1.80	53.5	41.9	30.0	23.4	19.5	13.3	11.0	9.37	6.12	5.15
	1.67	379	277	205	123	91.8	75.5	1.75	57.1	43.0	30.6	24.2	19.9	13.6	11.3	9.63	6.30	5.34

PBC12120	1.80	329	247	195	127	94.5	77.5	1.85	53.9	43.3	30.8	24.4	20.4	14.0	11.6	10.4	6.45	5.44
	1.75	384	277	213	131	97.2	80.4	1.80	57.8	45.9	32.6	25.6	21.3	14.4	12.0	11.1	6.76	5.68
	1.67	412	303	224	136	100	82.5	1.75	59.7	47.1	33.5	26.4	22.0	14.9	12.3	11.3	6.87	5.81
PBC12135	1.80	370	277	219	142	106	87.0	1.85	60.4	48.6	34.6	27.4	22.9	15.7	13.1	11.6	7.24	6.11
	1.75	431	311	238	146	109	90.4	1.80	64.9	51.6	36.7	28.9	23.8	16.2	13.5	12.6	7.59	6.38
	1.67	463	341	250	154	113	92.6	1.75	67.0	52.8	37.6	29.6	24.7	16.7	13.9	12.8	7.72	6.54
PBC12150	1.80	411	309	246	158	117	96.4	1.85	67.1	53.9	38.7	30.4	25.2	17.0	14.0	11.8	7.82	6.61
	1.75	475	346	264	164	121	100	1.80	71.7	57.1	40.8	32.0	26.5	18.0	15.0	12.8	8.34	7.04
	1.67	514	377	277	167	124	103	1.75	72.9	58.8	42.0	32.9	27.2	18.6	15.4	13.2	8.57	7.23
PBC12160	1.80	439	329	261	168	126	103	1.85	71.6	57.5	41.4	32.5	27.0	18.2	15.0	12.7	8.36	7.06
	1.75	507	369	281	176	130	107	1.80	76.7	61.0	43.5	34.2	28.2	19.3	16.0	13.6	8.90	7.52
	1.67	549	403	296	180	133	110	1.75	77.9	62.7	45.0	35.2	29.1	19.9	16.4	14.0	9.14	7.72
PBC12180	1.80	492	369	293	187	140	118	1.85	80.6	64.5	45.9	36.2	29.9	20.8	17.1	14.5	9.6	7.87
	1.75	570	415	317	195	150	119	1.80	86.2	68.6	48.8	38.3	31.8	21.5	18.0	15.3	9.9	8.41
	1.67	614	449	332	201	152	123	1.75	88.0	70.3	49.9	39.3	32.3	22.1	18.4	15.7	10.2	8.66
PBC12200	1.80	548	411	325	208	157	132	1.85	89.8	72.0	51.1	40.3	33.4	23.2	19.0	16.2	10.7	8.76
	1.75	636	463	352	217	165	134	1.80	96.0	76.5	54.5	42.6	35.4	24.0	20.0	17.0	11.1	9.37
	1.67	684	500	368	224	168	137	1.75	98.0	78.2	55.5	43.7	36.1	24.7	20.5	17.5	11.4	9.65
PBC12230	1.80	632	474	375	239	181	152	1.85	104	83.0	59.0	46.4	38.5	26.7	22.0	18.6	12.3	10.1
	1.75	734	534	407	251	191	155	1.80	111	88.3	62.8	49.1	40.9	27.7	23.0	19.6	12.9	10.8
	1.67	788	577	425	257	195	158	1.75	113	90.1	64.1	50.4	41.5	28.3	23.7	20.2	13.2	11.1
PBC665	1.80	179	134	108	68.8	51.3	42.1	1.85	29.3	23.5	16.9	13.3	11.0	7.41	6.12	5.17	3.41	2.89
	1.75	208	151	115	71.6	52.6	43.8	1.80	31.3	24.9	17.8	14.0	11.6	7.87	6.55	5.59	3.64	3.08
	1.67	225	165	121	73.1	54.1	44.8	1.75	31.9	25.7	18.3	14.4	11.8	8.12	6.73	5.74	3.74	3.15
PBC6150	1.80	411	309	246	158	117	96.4	1.85	67.1	53.9	38.7	30.4	25.2	17.0	14.0	11.8	7.82	6.61
	1.75	475	346	264	164	121	100	1.80	71.7	57.1	40.8	32.0	26.5	18.0	15.0	12.8	8.34	7.04
	1.67	514	377	277	167	124	103	1.75	72.9	58.8	42.0	32.9	27.2	18.6	15.4	13.2	8.57	7.23
PBC6180	1.80	492	369	293	187	140	118	1.85	80.6	64.5	45.9	36.2	29.9	20.8	17.1	14.5	9.6	7.87
	1.75	570	415	317	195	150	119	1.80	86.2	68.6	48.8	38.3	31.8	21.5	18.0	15.3	9.9	8.41
	1.67	614	449	332	201	152	123	1.75	88.0	70.3	49.9	39.3	32.3	22.1	18.4	15.7	10.2	8.66
PBC6200	1.80	548	411	325	208	157	132	1.85	89.8	72.0	51.1	40.3	33.4	23.2	19.0	16.2	10.7	8.76
	1.75	636	463	352	217	165	134	1.80	96.0	76.5	54.5	42.6	35.4	24.0	20.0	17.0	11.1	9.37
	1.67	684	500	368	224	168	137	1.75	98.0	78.2	55.5	43.7	36.1	24.7	20.5	17.5	11.4	9.65

Actual battery performance data may be $\pm 5\%$ of figures shown above

Standard Range Discharge Watts Per Cell (WPC) Data @ 20°C (68°F)

Battery Model	End VPC	Discharge Data WPC @ 20°C						End VPC	Discharge Data Watts Per Cell @ 20°C									
		Discharge Time In Minutes							Discharge Time In Hours									
		5	10	15	30	45	60		1.5	2	3	4	5	8	10	12	20	24
PBC1235	1.80	169	126	99.5	65.4	48.7	41.2	1.85	28.2	22.8	16.3	12.9	10.8	7.53	6.28	5.51	3.66	3.03
	1.75	188	137	105	66.1	50.0	41.8	1.80	31.8	24.0	17.3	13.6	11.4	7.80	6.44	5.59	3.77	3.13
	1.67	196	151	110	67.2	52.6	42.6	1.75	33.1	24.7	17.6	14.0	11.6	7.93	6.57	5.71	3.79	3.18

PBC1250	1.80	272	203	159	109	82.6	66.6	1.85	45.7	36.9	27.0	21.1	17.5	11.9	9.93	8.41	5.64	4.67
	1.75	305	221	170	112	86.1	67.4	1.80	48.1	38.7	27.9	22.1	18.4	12.6	10.5	8.96	5.87	4.97
	1.67	325	240	180	116	91.2	68.7	1.75	50.2	39.7	28.9	22.5	18.8	12.8	10.7	9.12	5.98	5.08
PBC1255	1.80	282	211	165	113	85.7	69.1	1.85	47.4	38.3	28.0	21.9	18.2	12.4	10.3	8.73	5.85	4.85
	1.75	316	229	176	116	89.4	69.9	1.80	49.9	40.2	29.0	22.9	19.1	13.1	10.9	9.30	6.09	5.16
	1.67	337	249	187	120	94.6	71.3	1.75	52.1	41.2	30.0	23.3	19.5	13.3	11.1	9.46	6.21	5.27
PBC1265	1.80	358	267	212	136	104	84.9	1.85	60.1	48.5	34.8	27.6	22.9	15.7	13.0	11.1	7.27	6.10
	1.75	400	291	222	138	106	88.4	1.80	63.6	51.1	36.7	29.1	24.2	16.6	13.8	11.8	7.73	6.56
	1.67	422	310	233	143	110	90.4	1.75	66.3	52.4	37.4	29.6	24.6	16.8	14.0	11.9	7.89	6.67
PBC1280	1.80	411	305	242	155	116	97.2	1.85	68.7	55.4	39.9	31.5	26.3	18.0	14.9	12.8	8.35	7.08
	1.75	458	334	255	162	120	100	1.80	72.4	58.5	41.9	33.2	27.6	18.9	15.7	13.5	8.84	7.49
	1.67	479	354	265	169	128	103	1.75	74.1	59.8	42.9	33.8	28.1	19.2	16.2	13.8	9.02	7.64
PBC1290	1.80	461	343	272	177	133	110	1.85	77.5	62.4	44.9	35.5	29.5	20.3	16.7	14.6	9.53	7.93
	1.75	515	374	287	180	137	115	1.80	81.5	65.9	47.3	37.4	31.2	21.3	17.7	15.2	9.96	8.43
	1.67	548	405	302	186	142	120	1.75	84.2	67.5	48.3	38.2	31.7	21.8	18.2	15.5	10.2	8.61
PBC12100	1.80	511	382	301	192	149	124	1.85	86.0	69.6	49.9	39.4	32.8	22.7	18.8	16.2	10.5	8.93
	1.75	572	415	318	200	152	128	1.80	91.6	73.1	52.6	41.5	34.5	23.7	19.8	16.8	11.1	9.36
	1.67	610	452	334	205	157	132	1.75	94.1	74.9	53.6	42.3	35.2	24.2	20.1	17.3	11.3	9.54
PBC12110	1.80	565	414	332	220	166	139	1.85	94.8	76.7	55.1	43.8	36.2	24.9	20.6	17.8	12.1	9.73
	1.75	633	457	350	227	172	144	1.80	103	80.6	57.9	45.7	38.1	26.1	21.8	18.6	12.3	10.3
	1.67	675	498	372	234	179	149	1.75	110	82.6	59.1	46.6	38.9	26.7	22.2	19.0	12.4	10.5
PBC12120	1.80	617	459	362	233	181	151	1.85	104	83.9	60.1	48.0	40.5	27.7	23.2	20.8	13.1	10.6
	1.75	689	501	384	243	187	155	1.80	110	88.0	63.4	50.1	41.6	28.7	23.7	22.3	13.4	11.3
	1.67	733	544	404	249	195	163	1.75	113	90.2	64.6	50.9	42.5	29.1	24.3	22.6	13.6	11.5
PBC12135	1.80	692	516	407	263	204	168	1.85	116	94.2	67.6	53.9	45.4	31.1	26.0	23.4	14.6	11.9
	1.75	774	563	431	273	209	174	1.80	123	98.9	71.1	56.3	46.6	32.1	26.7	24.9	15.1	12.7
	1.67	823	611	453	279	219	183	1.75	128	101	72.6	57.3	47.7	32.7	27.3	25.4	15.4	13.0
PBC12150	1.80	770	573	453	291	225	186	1.85	129	104	75.9	60.2	49.9	34.1	28.4	24.2	16.1	13.5
	1.75	860	623	478	302	229	192	1.80	138	110	78.9	62.3	51.8	35.7	29.6	25.3	16.5	14.0
	1.67	914	676	503	312	237	198	1.75	140	112	80.9	63.8	52.8	36.3	30.2	25.8	16.8	14.3
PBC12160	1.80	822	612	483	311	241	199	1.85	138	111	81.0	64.3	53.2	36.5	30.4	25.8	17.2	14.4
	1.75	918	665	510	323	245	206	1.80	147	118	84.2	66.5	55.3	38.1	31.6	27.1	17.7	15.0
	1.67	976	722	538	333	254	211	1.75	150	120	86.4	68.1	56.5	38.7	32.3	27.5	18.1	15.3
PBC12180	1.80	921	684	541	347	270	221	1.85	155	128	89.7	71.2	59.2	40.9	34.2	29.5	19.4	15.9
	1.75	1030	746	571	362	277	229	1.80	166	131	94.3	74.6	62.0	42.6	35.5	30.3	20.0	16.8
	1.67	1096	805	601	371	286	234	1.75	171	136	96.3	76.0	63.3	43.4	36.2	30.9	20.3	17.1
PBC12200	1.80	1026	762	602	387	300	246	1.85	173	141	100	79.3	66.0	45.5	38.0	32.8	21.5	17.8
	1.75	1147	830	637	403	309	254	1.80	185	146	105	83.0	69.1	47.5	39.3	33.8	22.2	18.7
	1.67	1222	897	670	413	318	261	1.75	190	151	107	84.7	70.5	48.3	40.3	34.3	22.6	19.0

PBC12230	1.80	1184	879	694	447	346	282	1.85	199	164	116	91.5	76.1	52.5	43.8	37.9	24.9	20.5
	1.75	1323	958	735	464	356	293	1.80	213	168	121	95.8	79.8	54.7	45.5	38.9	25.5	21.6
	1.67	1409	1034	773	476	367	301	1.75	220	174	123	97.7	81.4	55.6	46.4	39.6	26.1	22.0
PBC665	1.80	336	250	198	127	98.2	81.2	1.85	56.5	45.6	33.1	26.3	21.7	14.9	12.4	10.6	7.02	5.88
	1.75	375	272	209	132	100	84.0	1.80	60.3	48.0	34.4	27.2	22.6	15.6	12.9	11.1	7.21	6.12
	1.67	400	295	220	136	103	86.4	1.75	61.2	48.9	35.3	27.8	23.0	15.9	13.2	11.3	7.35	6.27
PBC6150	1.80	770	573	453	291	225	186	1.85	129	104	75.9	60.2	49.9	34.1	28.4	24.2	16.1	13.5
	1.75	860	623	478	302	229	192	1.80	138	110	78.9	62.3	51.8	35.7	29.6	25.3	16.5	14.0
	1.67	914	676	503	312	237	198	1.75	140	112	80.9	63.8	52.8	36.3	30.2	25.8	16.8	14.3
PBC6180	1.80	921	684	541	347	270	221	1.85	155	128	89.7	71.2	59.2	40.9	34.2	29.5	19.4	15.9
	1.75	1030	746	571	362	277	229	1.80	166	131	94.3	74.6	62.0	42.6	35.5	30.3	20.0	16.8
	1.67	1096	805	601	371	286	234	1.75	171	136	96.3	76.0	63.3	43.4	36.2	30.9	20.3	17.1
PBC6200	1.80	1026	762	602	387	300	246	1.85	173	141	100	79.3	66.0	45.5	38.0	32.8	21.5	17.8
	1.75	1147	830	637	403	309	254	1.80	185	146	105	83.0	69.1	47.5	39.3	33.8	22.2	18.7
	1.67	1222	897	670	413	318	261	1.75	190	151	107	84.7	70.5	48.3	40.3	34.3	22.6	19.0

Actual battery performance data may be \pm 5% of figures shown above

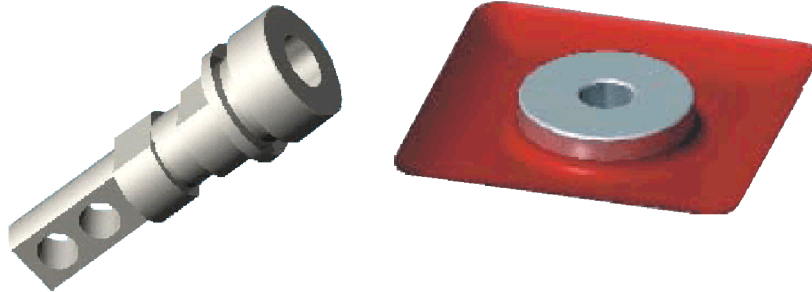
Standard Range Electrical Specifications & Dimensions

Battery Model	Capacity C/10 1.80VPC	CCA at -18°C (0°F)	CCA at 0°C (32°F)	Short Circuit Amps	Internal Resistance Milli-ohms	Terminal Type	Battery Weight (kg/lb)		Outline Dimensions (mm/inch)					
									Length		Width		Height	
PBC1235	35	240	320	150.0	7.0	FT1 or Flag	10.9	24.0	195	7.68	130	5.12	165	6.50
PBC1250	50	280	380	190.0	5.6	FT2	16.8	37.1	215	8.46	118	4.65	255	10.0
PBC1255	55	280	380	190.0	5.6	FT2	17.5	38.6	228	8.98	137	5.39	213	8.39
PBC1265	70	410	550	210.0	5.0	FT2	21.5	47.4	259	10.2	168	6.62	215	8.50
PBC1280	80	460	620	240.0	4.5	FT2	23.7	52.3	259	10.2	168	6.62	215	8.50
PBC1290	90	510	680	265.0	4.0	FT2	25.9	57.1	259	10.2	168	6.62	215	8.50
PBC12100	100	580	780	290.0	3.5	FT2	30.0	66.2	305	12.0	168	6.62	215	8.50
PBC12110	110	710	960	300.0	3.4	FT2	32.0	70.6	332	13.1	174	6.86	220	8.67
PBC12120	120	760	1020	330.0	3.1	FT2	34.0	75.0	332	13.1	174	6.86	220	8.67
PBC12135	135	880	1160	375.0	2.7	FT3	39.6	87.5	340	13.4	173	6.81	288	11.3
PBC12150	150	970	1300	420.0	2.5	FT3	45.0	99.2	480	18.9	170	6.70	240	9.45
PBC12160	160	1080	1440	470.0	2.0	FT3	52.2	115	530	20.9	209	8.23	220	8.66
PBC12180	180	1170	1550	540.0	1.8	FT3	60.5	133	520	20.5	238	9.37	220	8.67
PBC12200	200	1240	1670	540.0	1.8	FT3	65.0	143	520	20.5	238	9.37	220	8.67
PBC12230	230	1400	1870	590.0	1.5	FT3	70.0	155	520	20.5	269	10.6	210	8.27
PBC665	65	380	525	180.0	3.8	*FT2 or CA	11.3	25.0	185	7.30	112	4.39	205	8.06
PBC6150	150	950	1280	450.0	2.5	FT3	25.0	55.1	260	10.2	180	7.09	252	9.92
PBC6180	180	1100	1450	480.0	2.0	FT3	28.0	61.7	306	12.0	168	6.61	228	8.98
PBC6200	200	1200	1600	500.0	1.8	FT3	31.0	68.4	320	12.6	173	6.82	230	9.06

*CA: Cable assembly with TEW-105 (#12 AWG) tinned copper wire, AMP connector housing

Plug Kit and sockets.

Female Terminal Type (FT)



Battery Model	BCI Group Size
PBC1235	U1
PBC1250 /55	22NF
PBC1265 /80	24
PBC1290	24
PBC12100	27
PBC12110 /120	27
PBC12150 /160	31
PBC12180 /200	4D
PBC12230	8D
PBC6200	4

<p>M6 SS Bolt</p> <p>14 mm Dia. Copper Insert</p>	<p>M6 SS Bolt</p> <p>16 mm Dia. Copper Insert</p>	<p>M8 SS Bolt</p> <p>18 mm Dia. Copper Insert</p>
<p>Threaded Copper Insert 14 mm Dia. for M6 Bolt TYPE "FT1"</p>	<p>Threaded Copper Insert 16 mm Dia. for M6 Bolt TYPE "FT2"</p>	<p>Threaded Copper Insert 18 mm Dia. for M8 Bolt TYPE "FT3"</p>

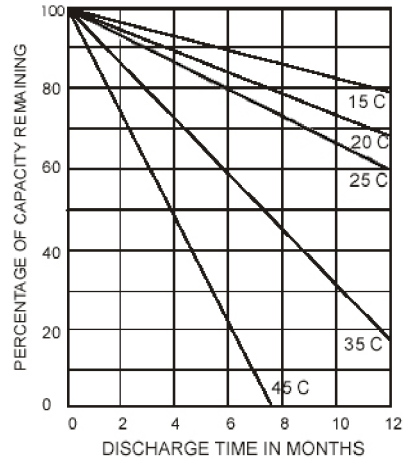
Constant Voltage Charging

It is recommended to use Constant Voltage method of charging for Valve Regulated lead acid (VRLA) Batteries. Charging voltages must be regularly checked. To optimize the battery performance, it is necessary to ensure that the voltage is kept within the following limits.

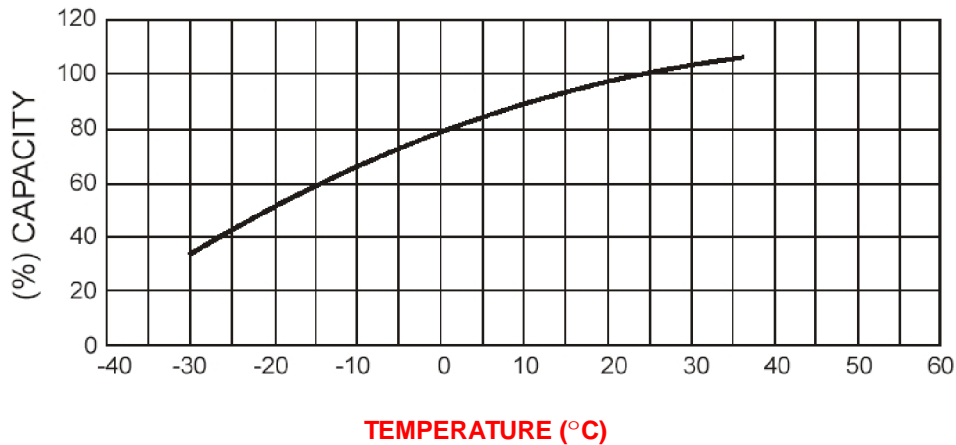
Float Service: 2.25 +/- 1% Volts Per Cell at 20°C (68°F).
 Cycle Service: 2.35 +/- 1% Volts Per Cell at 20°C (68°F).

Temperature Effects

Temperature affects the battery in a number of different ways. The battery will operate in extreme temperature ranges from -40°C(-40°F) to 60°C (140°F). However the Valve Regulated lead acid (VRLA) Battery nominal capacity, and optimum performance are based on operating temperature of 20°C . Above this temperature the battery capacity will increase slightly, however the battery life will decrease at the higher temperature.



When designing your battery system the different discharge and recharge performance at different temperature should be taken into account, details of both listed below.



Battery Charging (Temperature compensation)	
Temperature (°C)	Float Charge (Volts/ Cell)
5	2.31
10	2.29
15	2.27
20	2.25
25	2.25
30	2.23
35	2.21

Temperature Compensation is the process whereby the charge voltage is changed as a function of the battery temperature.

For higher or lower temperatures outside the table range use temperature correction factor of 0.004 ± 0.01 per volt per cell per °C